

SH-J1 SH-J2 SH-J3

SH-J4 SH-J5 SH-J6

SH-J7 SH-J8 SH-J9

SH-J10 SH-J11 SH-J12

SH-J13 SH-J14 SH-J15

SH-J16 SH-J17 SH-J18

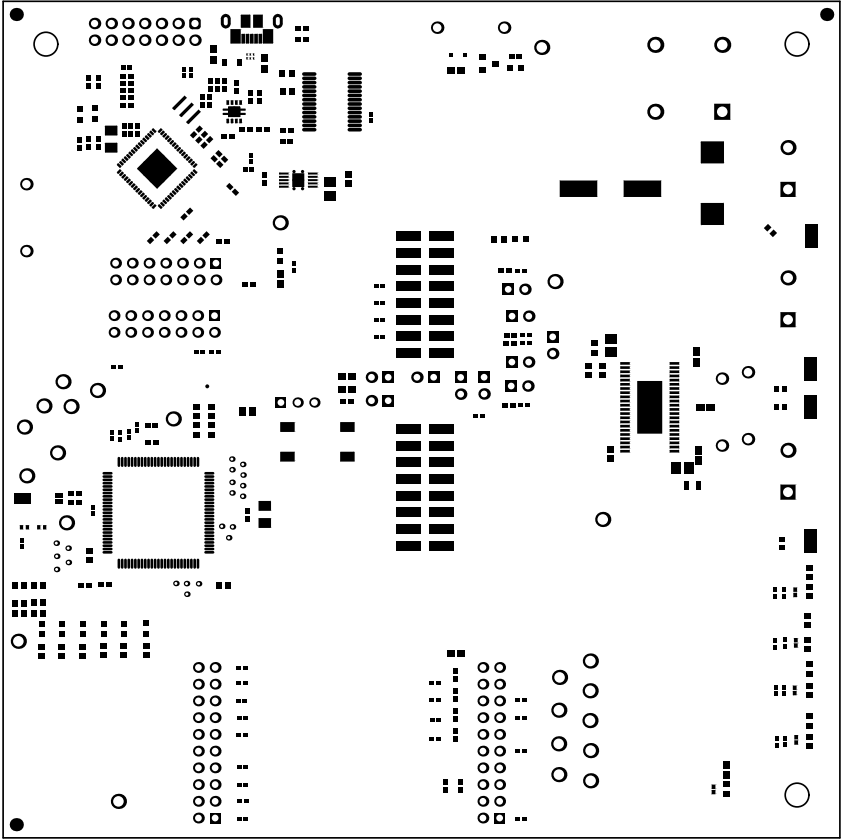
SH-J19 SH-J20 SH-J21

SH-J22 SH-J28

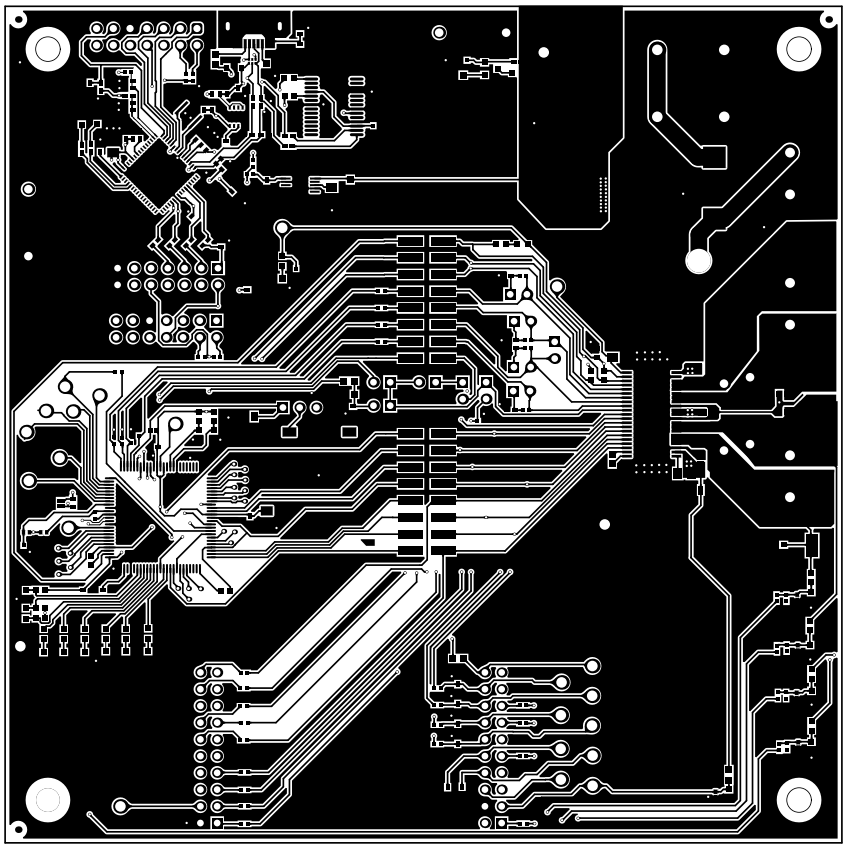
SH-J31 SH-J30

SH-J29 SH-J23 SH-J24 SH-J25 SH-J26

ALL ARTWORK VIEWED FROM TOP SIDE	BOARD #: MD040	REV: E2	SUN REV: 1d5cd23cf125c4a53b0405025d5f3f0521a625da [Locally Modified]
LAYER NAME = Top Overlay	TID #: N/A		
PLOT NAME = Top Overlay	GENERATED : 8/11/2022 5:14:58 PM	TEXAS INSTRUMENTS	

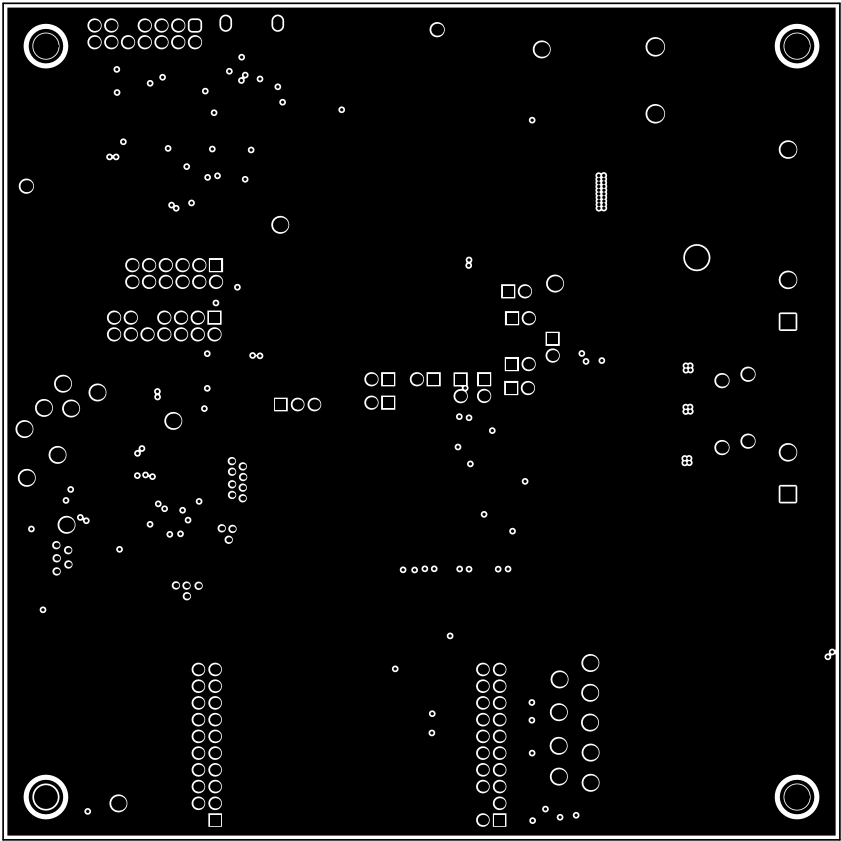


ALL ARTWORK VIEWED FROM TOP SIDE	BOARD #: M0040	REV: E2	SUN REV: 1d5cd23cf125c4a53b0405025d5f3f0521a625da [Locally Modified]
LAYER NAME = Top Solder	TID #: N/A		
PLOT NAME = Top Solder Mask	GENERATED : 8/11/2022	5:14:58 PM	TEXAS INSTRUMENTS

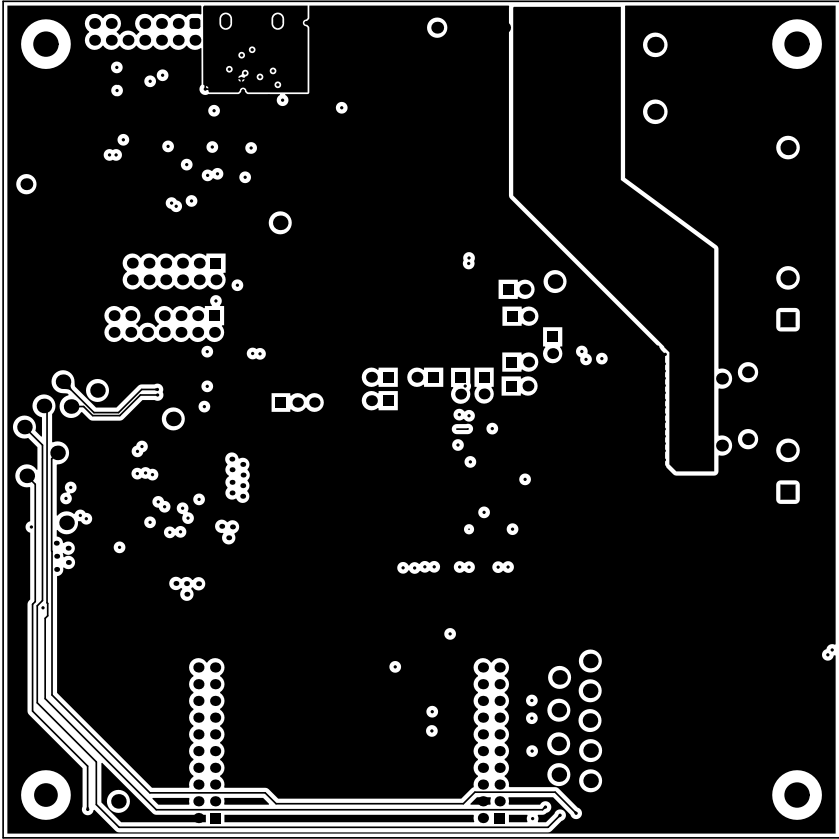


○

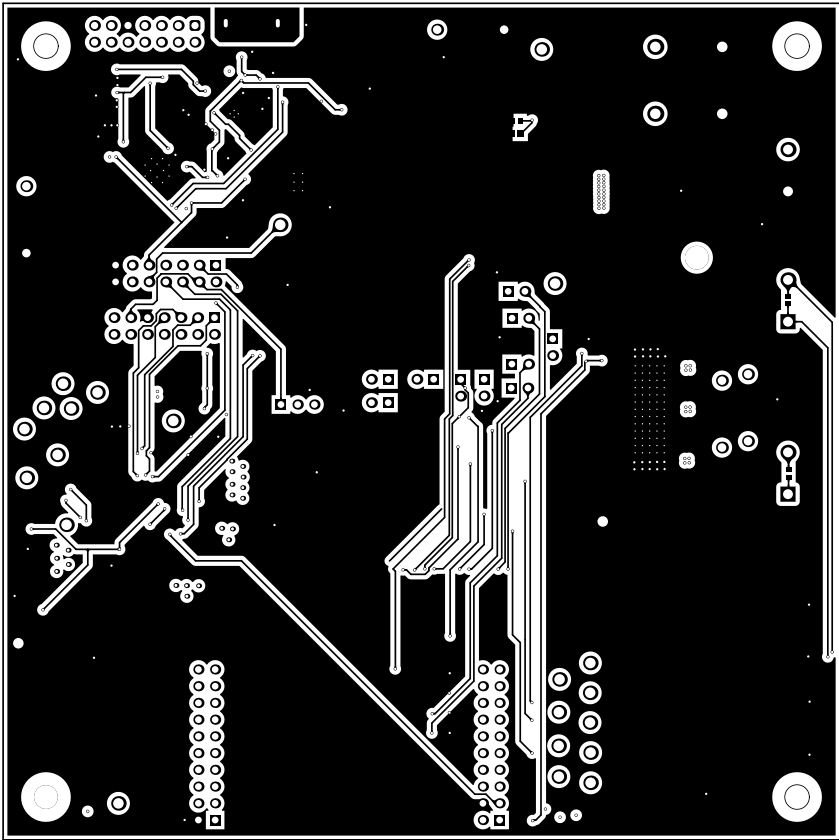
ALL ARTWORK VIEWED FROM TOP SIDE	BOARD #: MDO40	REV: E2	SUN REV: 1d5cd23cf125c4a53b0405025d5f3f0521a625da [Locally Modified]
LAYER NAME = Top Layer	TID #: N/A		
PLOT NAME = Top Layer	GENERATED : 8/11/2022	5:14:59 PM	TEXAS INSTRUMENTS



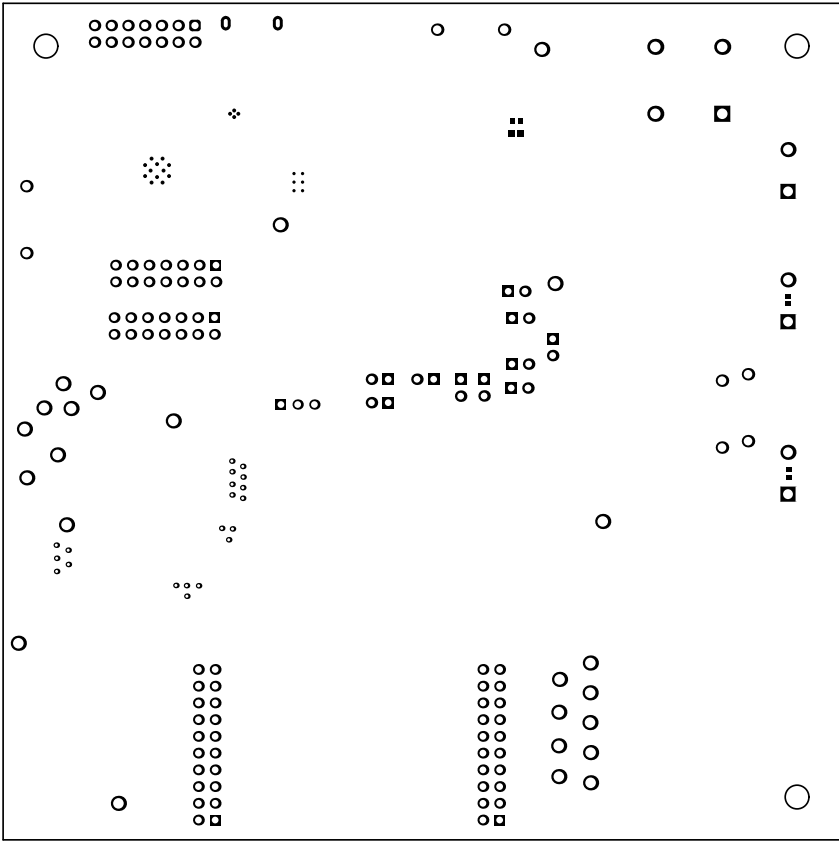
ALL ARTWORK VIEWED FROM TOP SIDE	BOARD #: MDO40	REV: E2	SUN REV: 1d5cd23cf125c4a53b0405025d5f3f0521a625da [Locally Modified]
LAYER NAME =	TID #: N/A		
PLOT NAME = Signal 1	GENERATED : 8/11/2022	5:14:59 PM	TEXAS INSTRUMENTS



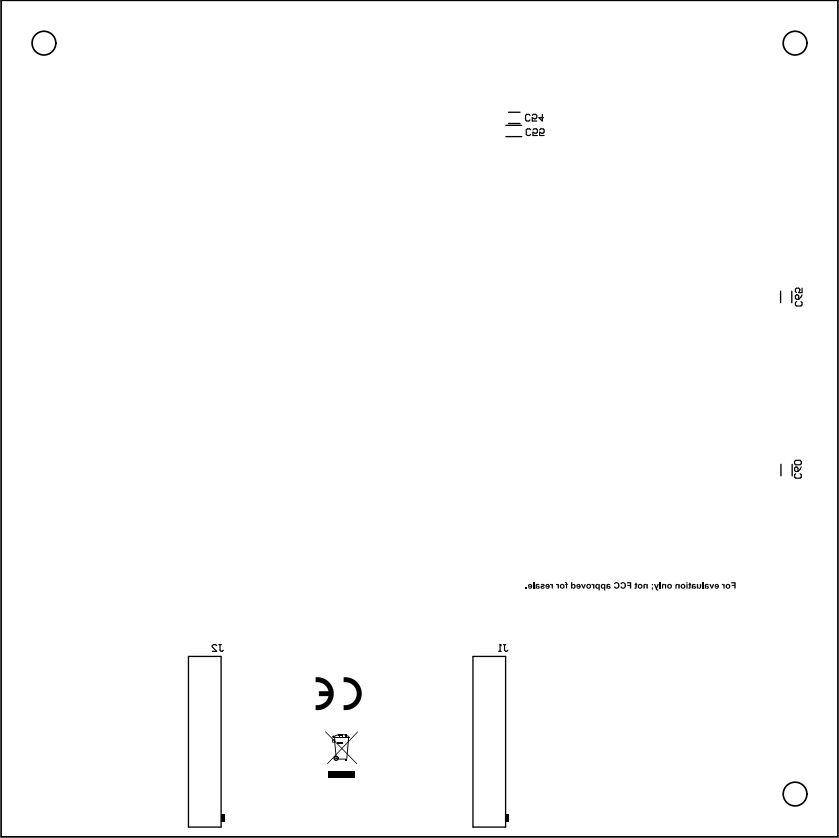
ALL ARTWORK VIEWED FROM TOP SIDE	BOARD #: M0040	REV: E2	SUN REV: 1d5cd23cf125c4a53b0405025d5f3f0521a625da [Locally Modified]
LAYER NAME =	TID #: N/A		
PLOT NAME = Signal 2	GENERATED : 8/11/2022 5:15:00 PM	TEXAS INSTRUMENTS	



ALL ARTWORK VIEWED FROM TOP SIDE	BOARD #: M0040	REV: E2	SUN REV: 1d5cd23cf125c4a53b0405025d5f3f0521a625da [Locally Modified]
LAYER NAME = Bottom Layer	TID #: N/A		
PLOT NAME = Bottom Layer	GENERATED : 8/11/2022	5:15:00 PM	TEXAS INSTRUMENTS



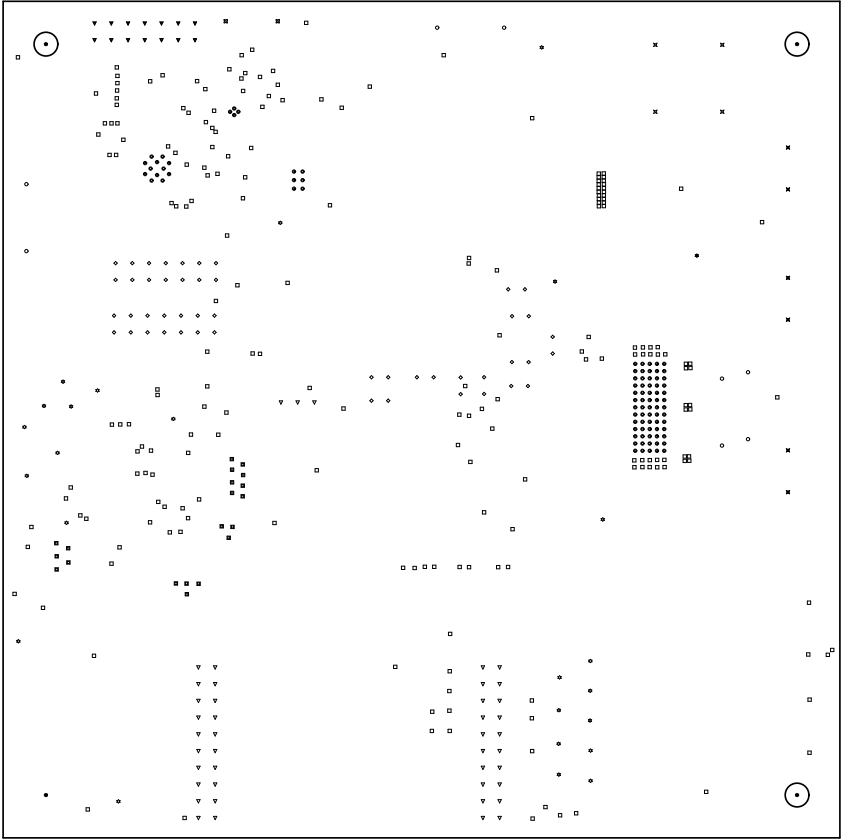
ALL ARTWORK VIEWED FROM TOP SIDE	BOARD #: MDO40	REV: E2	SUN REV: 1d5cd23cf125c4a53b0405025d5f3f0521a625da [Locally Modified]
LAYER NAME = Bottom Solder	TID #: N/A		
PLOT NAME = Bottom Solder Mask	GENERATED : 8/11/2022 5:15:01 PM	TEXAS INSTRUMENTS	



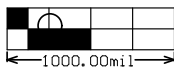
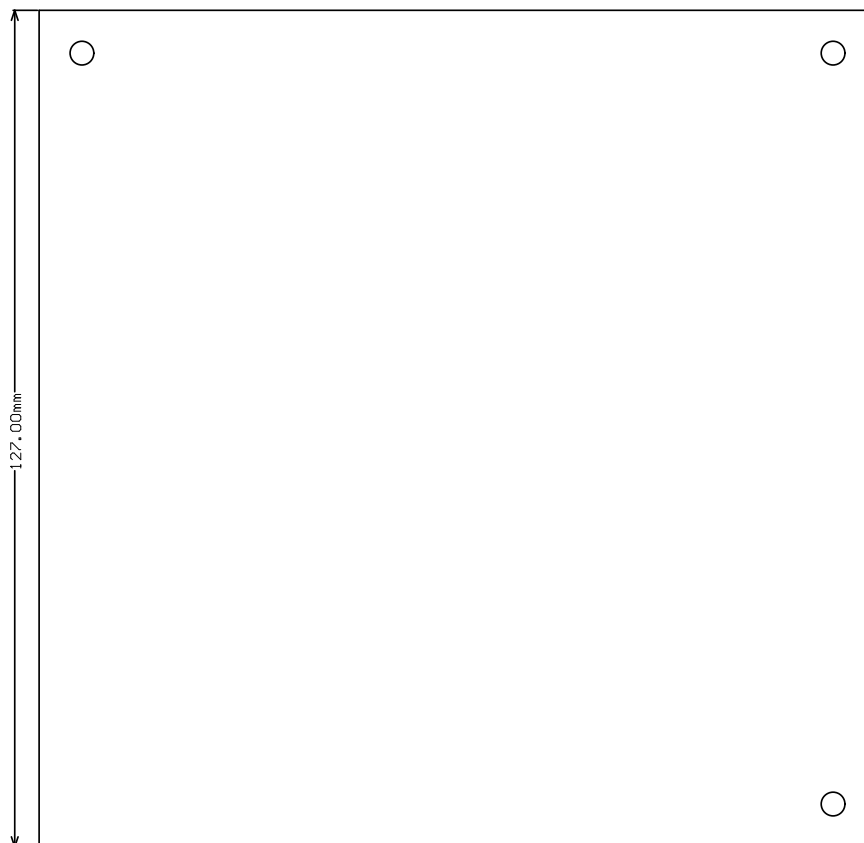
ALL ARTWORK VIEWED FROM TOP SIDE	BOARD #: MDO40	REV: E2	SUN REV: 1d5cd23cf125c4a53b0405025d5f3f0521a625da [Locally Modified]
LAYER NAME = Bottom Overlay	TID #: N/A		
PLOT NAME = Bottom Overlay	GENERATED : 8/11/2022 5:15:01 PM	TEXAS INSTRUMENTS	

Symbol	Quantity	Finished Hole Size	Plated	Hole Type	Drill Layer Pair	Hole Tolerance
⊙	87	7,87mil (0,200mm)	PTH	Round	Top Layer - Bottom Layer	±/-1,97mil
□	211	13,78mil (0,350mm)	PTH	Round	Top Layer - Bottom Layer	
■	20	17,72mil (0,450mm)	PTH	Round	Top Layer - Bottom Layer	
◇	48	40,00mil (1,016mm)	PTH	Round	Top Layer - Bottom Layer	
▽	43	40,16mil (1,020mm)	PTH	Round	Top Layer - Bottom Layer	
▼	14	43,31mil (1,100mm)	PTH	Round	Top Layer - Bottom Layer	
○	8	51,18mil (1,300mm)	PTH	Round	Top Layer - Bottom Layer	
⊗	6	59,06mil (1,500mm)	PTH	Round	Top Layer - Bottom Layer	
⊗	4	62,99mil (1,600mm)	PTH	Round	Top Layer - Bottom Layer	
☆	24	63,00mil (1,600mm)	PTH	Round	Top Layer - Bottom Layer	
★	5	141,73mil (3,600mm)	PTH	Round	Top Layer - Bottom Layer	
⊗	2	23,62mil (0,600mm)	PTH	Slot	Top Layer - Bottom Layer	
472 Total						

Slot definitions : Routed Path Length = Calculated from tool start centre position to tool end centre position.
Hole Length = Routed Path Length + Tool Size = Slot length as defined in the PCB layout



ALL ARTWORK VIEWED FROM TOP SIDE	BOARD #: MDO40	REV: E2	SUN REV: 1d5cd23cf125c4a53b0405025d5f3f0521a625da [Locally Modified]
LAYER NAME = Drill Drawing	TID #: N/A		
PLOT NAME = Drill Drawing	GENERATED : 8/11/2022 5:15:02 PM	TEXAS INSTRUMENTS	



ALL ARTWORK VIEWED FROM TOP SIDE	BOARD #: MDO40	REV: E2	SUN REV: 1d5cd23cf125c4a53b0405025d5f3f0521a625da [Locally Modified]
LAYER NAME = M2 Board Dimensions	TID #: N/A		
PLOT NAME = Board Dimensions	GENERATED : 8/11/2022 5:15:03 PM	TEXAS INSTRUMENTS	